

Disabled Toilet Locking System



The RADAR WC with Steritouch antimicrobial additive built in, offers protection from bacteria for its lifetime.

The antimicrobial acrylic is non scratch, anti-reflective and non-porous which makes it easy to clean and maintain, controlling the growth of bacteria and fungi without affecting the colour or transparency.

Benefits

- » Easy to use operation
- » Easy to clean
- » Simple non-resistive quarter turn
- » Stainless steel construction
- » No jamming
- » Accepts all RADAR keys
- » 2 x sealed microswitches
- » Reliable and adaptable design
- » Steritouch bacterial protection will never wash or wear away

Kit includes

- » 12v 3Amp battery backed power supply
- » Battery
- » Break-glass
- » Door sense mag lock
- » Choice of internal/external switch (with integral key override)

Electronic RADAR Key Systems

Benefits

- » Powered by 12-24Vdc.
- » Switching Red & Blue LEDs to show engaged or vacant status. (colour blind users can't always distinguish between Red & Green)
- » Operation by anti-microbial No Touch switches.
- » Switching available in a choice of styles to suit the installation.
- » Key-switch on all external sensors for emergency entry. Anti-prank contact to prevent misuse.
- » Timed clean output for auto door activation.

Key Entry Devices



SQWCRADAR-E
Surface mount



AWCRADAR-E
Surface mount for barrier or post.



DGHRADAR-E
Surface or Flush (Double Gang)



DGVRADAR-E
Surface or Flush (Double Gang)



DGVRADAR-E + COIN
Surface (Bespoke options)

Lock - Open Devices

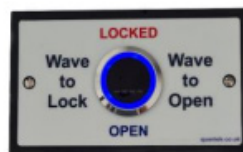


Square

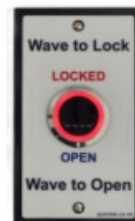


Architrave

LOCK - OPEN Devices



Wave to open

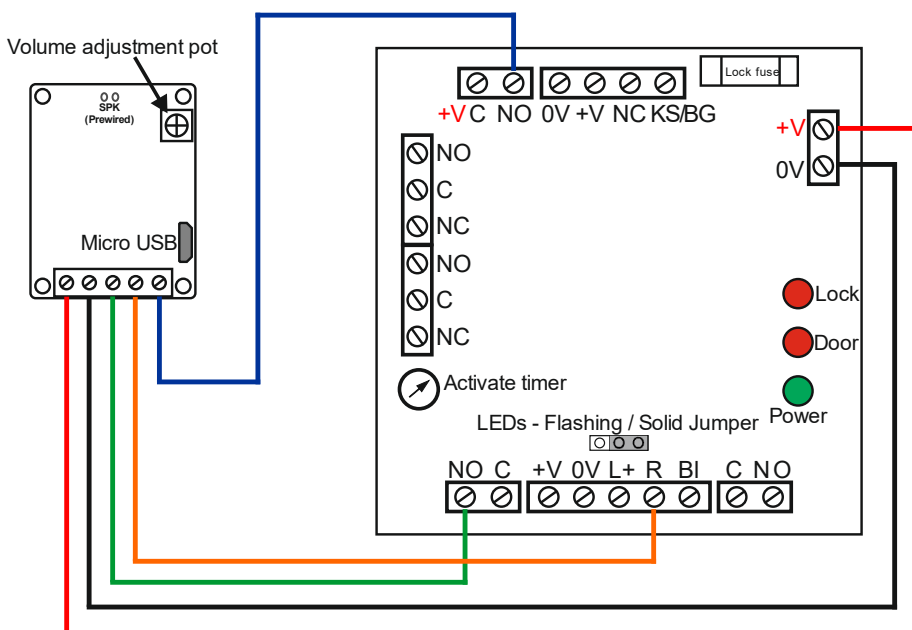


Single gang

Technical Specifications

Specifications

Housing	SQ & A glass reinforced nylon, back and front seal. DG powder coated aluminium.
Fascia	Antimicrobial, anti-scratch, anti-reflective. Hard coat polyester.
Dimensions	SQUARE - 124 x124 x 32 ARCHITRAVE - 227 x 42 x 45 DG - 86x140
Escutcheon	316 stainless steel (internal contact material 316 stainless steel)
Functionality	On operation the blue LED will change to green and an internal sounder will operate for a pre-set time. Red LED illuminated when engaged. (Key switch inoperable) (Blue lamp used as opposed to green to help colour blind users)
Control panel	Multi-functional control panel that will accommodate any criteria.
New option	MP3 digital audio 3 stage messaging system is available giving warning and operation instructions. PC programmed, male or female voice.
Voltage	12 - 24v DC
MP3-Voice	Wall or ceiling mount 3 stage voice instruction/warning unit. 86 x 86. Flush or surface fit.



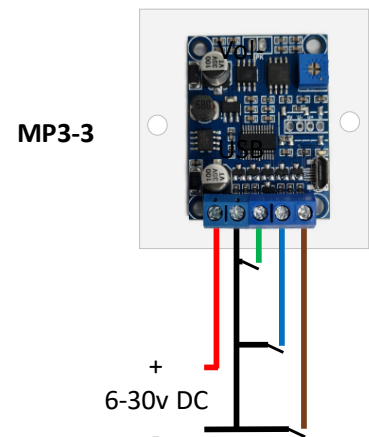
MP3 Voice Message Announcers

Features

- » Built-in high quality MP3 player with great sound quality
- » Built-in 4MB flash memory as the storage device
- » Update sound files easily on computer through USB connection
- » Able to play a sound in a loop when power is applied
- » Able to play multiple sounds in order
- » Can play multiple sounds in random
- » Four one-on-one corresponding sound files
- » Can be hooked up to a switch/relay
- » Equipped with a high quality class D amplifier
- » Adjustable sound volume.
- » Wide power input and stable performance
- » Various housing / colour option
- » Boxed speaker giving exceptional sound to size ratio
- » 3 or 6 message option

Technical Parameters

Working voltage	6V to 30V DC
Working current	≤1000mA
Power consumption	≤3W
Flash memory size	4MB
Audio format	MP3
Sound pressure level	≤90dB
Volume control	
USB to PC	
Speaker	8ohm 2 watt high performance
Dimensions	86 x 86 x 25



Speak to your
Regional Account
Manager

